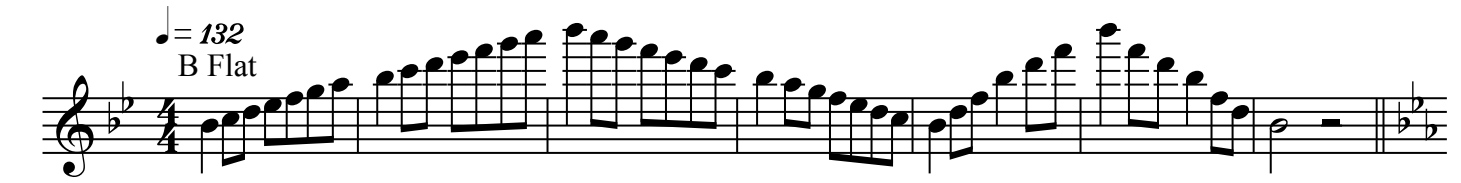


# WHSAA Scale Sheet - Flute

$\text{♩} = 132$   
B Flat



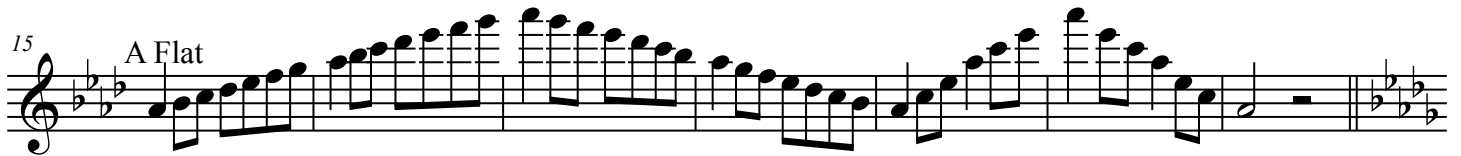
Musical staff for B Flat scale, measures 1-7. The staff is in treble clef with a key signature of two flats (Bb and Eb) and a 4/4 time signature. The music consists of eighth-note runs ascending and descending, with a final whole note chord.

8 E Flat



Musical staff for E Flat scale, measures 8-14. The staff is in treble clef with a key signature of three flats (Bb, Eb, and Ab) and a 4/4 time signature. The music consists of eighth-note runs ascending and descending, with a final whole note chord.

15 A Flat



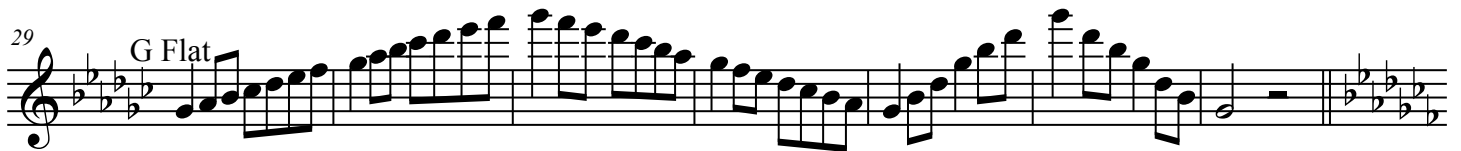
Musical staff for A Flat scale, measures 15-21. The staff is in treble clef with a key signature of four flats (Bb, Eb, Ab, and Db) and a 4/4 time signature. The music consists of eighth-note runs ascending and descending, with a final whole note chord.

22 D Flat



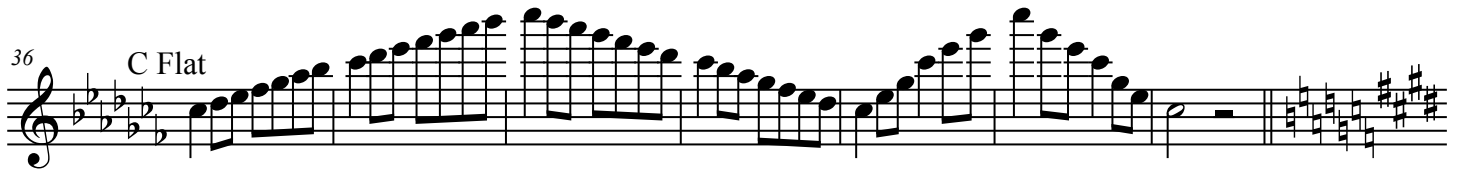
Musical staff for D Flat scale, measures 22-28. The staff is in treble clef with a key signature of five flats (Bb, Eb, Ab, Db, and Fb) and a 4/4 time signature. The music consists of eighth-note runs ascending and descending, with a final whole note chord.

29 G Flat



Musical staff for G Flat scale, measures 29-35. The staff is in treble clef with a key signature of six flats (Bb, Eb, Ab, Db, Fb, and Gb) and a 4/4 time signature. The music consists of eighth-note runs ascending and descending, with a final whole note chord.

36 C Flat



Musical staff for C Flat scale, measures 36-42. The staff is in treble clef with a key signature of seven flats (Bb, Eb, Ab, Db, Fb, Gb, and Cb) and a 4/4 time signature. The music consists of eighth-note runs ascending and descending, with a final whole note chord.

43 E



Musical staff for E scale, measures 43-49. The staff is in treble clef with a key signature of three sharps (F#, C#, and G#) and a 4/4 time signature. The music consists of eighth-note runs ascending and descending, with a final whole note chord.

50 A



Musical staff for A scale, measures 50-56. The staff is in treble clef with a key signature of three sharps (F#, C#, and G#) and a 4/4 time signature. The music consists of eighth-note runs ascending and descending, with a final whole note chord.

WHSAA Scale Sheet - Flute

2

57 D

# WHSAA Scale Sheet - Oboe

♩ = 132

B Flat

Musical staff for B Flat scale, measures 1-7. The staff is in treble clef with a key signature of two flats (Bb and Eb) and a 4/4 time signature. The scale is written in eighth notes, ascending and then descending.

8 E Flat

Musical staff for E Flat scale, measures 8-14. The staff is in treble clef with a key signature of three flats (Bb, Eb, and Ab) and a 4/4 time signature. The scale is written in eighth notes, ascending and then descending.

15 A Flat

Musical staff for A Flat scale, measures 15-18. The staff is in treble clef with a key signature of four flats (Bb, Eb, Ab, and Db) and a 4/4 time signature. The scale is written in eighth notes, ascending and then descending.

19 D Flat

Musical staff for D Flat scale, measures 19-25. The staff is in treble clef with a key signature of five flats (Bb, Eb, Ab, Db, and Fb) and a 4/4 time signature. The scale is written in eighth notes, ascending and then descending.

26 G Flat

Musical staff for G Flat scale, measures 26-29. The staff is in treble clef with a key signature of six flats (Bb, Eb, Ab, Db, Fb, and Gb) and a 4/4 time signature. The scale is written in eighth notes, ascending and then descending.

30 C Flat

Musical staff for C Flat scale, measures 30-36. The staff is in treble clef with a key signature of seven flats (Bb, Eb, Ab, Db, Fb, Gb, and Cb) and a 4/4 time signature. The scale is written in eighth notes, ascending and then descending.

37 E

Musical staff for E scale, measures 37-40. The staff is in treble clef with a key signature of three sharps (F#, C#, and G#) and a 4/4 time signature. The scale is written in eighth notes, ascending and then descending.

41 A

Musical staff for A scale, measures 41-44. The staff is in treble clef with a key signature of four sharps (F#, C#, G#, and D#) and a 4/4 time signature. The scale is written in eighth notes, ascending and then descending.

45 D

Musical staff for D scale, measures 45-51. The staff is in treble clef with a key signature of five sharps (F#, C#, G#, D#, and A#) and a 4/4 time signature. The scale is written in eighth notes, ascending and then descending.

52 G

Musical staff for G scale, measures 52-58. The staff is in treble clef with a key signature of two sharps (F# and C#) and a 4/4 time signature. The scale is written in eighth notes, ascending and then descending.

WHSAA Scale Sheet - Oboe

2  
36 C

Musical staff for C major scale starting at measure 36. The staff is in treble clef with a key signature of one flat (Bb). The scale begins with a half note C4, followed by quarter notes C4, D4, E4, F4, G4, A4, B4, C5, B4, A4, G4, F4, E4, D4, C4. The piece concludes with a whole note C4.

63 F

Musical staff for F major scale starting at measure 63. The staff is in treble clef with a key signature of two flats (Bb, Eb). The scale begins with a half note F3, followed by quarter notes F3, G3, A3, Bb3, C4, D4, E4, F4, E4, D4, C4, Bb3, A3, G3, F3. The piece concludes with a whole note F3.

67  $\text{♩} = 80$

Musical staff for F# major scale starting at measure 67. The staff is in treble clef with a key signature of two sharps (F#, C#). The scale begins with a half note F#3, followed by quarter notes F#3, G#3, A#3, B4, C#4, D#4, E#4, F#5, E#4, D#4, C#4, B4, A#3, G#3, F#3. The piece concludes with a whole note F#3. A tempo marking of quarter note = 80 is present above the staff.

69

Musical staff for F# minor scale starting at measure 69. The staff is in treble clef with a key signature of two sharps (F#, C#). The scale begins with a half note F#3, followed by quarter notes F#3, G#3, A#3, B4, C#4, D#4, E#4, F#5, E#4, D#4, C#4, B4, A#3, G#3, F#3. The piece concludes with a whole note F#3.

# WHSAA Scale Sheet - Bassoon

♩ = 132

B Flat



8 E Flat



15 A Flat



22 D Flat



29 G Flat



36 C Flat



43 E



50 A



WHSAA Scale Sheet - Bassoon

2

57 **D**

64 **G**

71 **C**

78 **F**

85 ***♩ = 112***

88

91

# WHSAA Scale Sheet - Clarinet

♩ = 132

C



Musical staff for C major scale, starting at measure 1. The key signature is C major (no sharps or flats). The scale is written in treble clef with a 4/4 time signature. The notes are: C4, D4, E4, F4, G4, A4, B4, C5, B4, A4, G4, F4, E4, D4, C4.

8 F



Musical staff for F major scale, starting at measure 8. The key signature is F major (one flat). The scale is written in treble clef with a 4/4 time signature. The notes are: F4, G4, A4, Bb4, C5, Bb4, A4, G4, F4.

15 B Flat



Musical staff for Bb major scale, starting at measure 15. The key signature is Bb major (two flats). The scale is written in treble clef with a 4/4 time signature. The notes are: Bb4, C5, D5, Eb5, F5, Eb5, D5, C5, Bb4.

22 E Flat



Musical staff for Eb major scale, starting at measure 22. The key signature is Eb major (three flats). The scale is written in treble clef with a 4/4 time signature. The notes are: Eb4, F4, G4, Ab4, Bb4, Ab4, G4, F4, Eb4.

29 A Flat



Musical staff for Ab major scale, starting at measure 29. The key signature is Ab major (four flats). The scale is written in treble clef with a 4/4 time signature. The notes are: Ab4, Bb4, C5, D5, Eb5, F5, Eb5, D5, C5, Bb4, Ab4.

36 D Flat



Musical staff for Db major scale, starting at measure 36. The key signature is Db major (five flats). The scale is written in treble clef with a 4/4 time signature. The notes are: Db4, Eb4, F4, Gb4, Ab4, Bb4, Ab4, Gb4, F4, Eb4, Db4.

43 F Sharp



Musical staff for F# major scale, starting at measure 43. The key signature is F# major (one sharp). The scale is written in treble clef with a 4/4 time signature. The notes are: F#4, G#4, A#4, B5, C#5, B5, A#4, G#4, F#4.

50 B



Musical staff for B major scale, starting at measure 50. The key signature is B major (two sharps). The scale is written in treble clef with a 4/4 time signature. The notes are: B4, C#4, D#4, E5, F#5, E5, D#4, C#4, B4.

WHSAA Scale Sheet - Clarinet

2

57 E

64 A

71 D

78 G

85 ♩ = 132

88

91

93



# WHSAA Scale Sheet - Bass Clarinet

$\text{♩} = 132$   
C

Musical staff for C major scale, measures 1-7. The staff is in treble clef with a 4/4 time signature. The scale is written in eighth notes, ascending and then descending.

8 F

Musical staff for F major scale, measures 8-14. The staff is in treble clef with a 4/4 time signature. The key signature has one flat (Bb). The scale is written in eighth notes, ascending and then descending.

15 B Flat

Musical staff for Bb major scale, measures 15-21. The staff is in treble clef with a 4/4 time signature. The key signature has two flats (Bb, Eb). The scale is written in eighth notes, ascending and then descending.

22 E Flat

Musical staff for Eb major scale, measures 22-28. The staff is in treble clef with a 4/4 time signature. The key signature has three flats (Bb, Eb, Ab). The scale is written in eighth notes, ascending and then descending.

29 A Flat

Musical staff for Ab major scale, measures 29-35. The staff is in treble clef with a 4/4 time signature. The key signature has four flats (Bb, Eb, Ab, Db). The scale is written in eighth notes, ascending and then descending.

36 D Flat

Musical staff for Db major scale, measures 36-42. The staff is in treble clef with a 4/4 time signature. The key signature has five flats (Bb, Eb, Ab, Db, Gb). The scale is written in eighth notes, ascending and then descending.

43 F Sharp

Musical staff for F# major scale, measures 43-49. The staff is in treble clef with a 4/4 time signature. The key signature has one sharp (F#). The scale is written in eighth notes, ascending and then descending.

50 B

Musical staff for B major scale, measures 50-56. The staff is in treble clef with a 4/4 time signature. The key signature has two sharps (F#, C#). The scale is written in eighth notes, ascending and then descending.

WHSAA Scale Sheet - Bass Clarinet

2

57 E



64 A



71 D



78 G



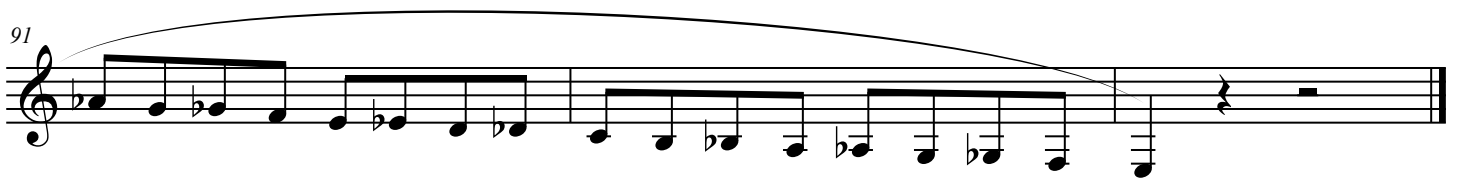
85 ♩ = 100



88



91



# WHSAA Scale Sheet - Saxophone

♩ = 132

5 G

5 C

12 F

16 B Flat

23 E Flat

30 A Flat

34 D Flat

41 F Sharp

45 B

52 E

WHSAA Scale Sheet - Saxophone

2  
36

A

60

D

$\text{♩} = 92$

67

69

# WHSAA Scale Sheet- Trumpet

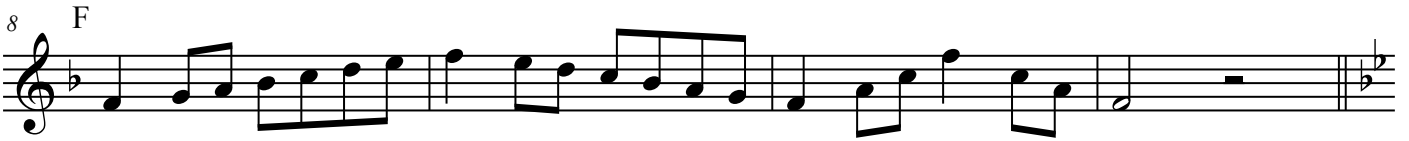
♩ = 132

C



Musical staff for C major scale, measures 1-7. The staff is in treble clef with a key signature of one flat (B-flat) and a 4/4 time signature. The scale is written in eighth notes, ascending and then descending.

8 F



Musical staff for F major scale, measures 8-11. The staff is in treble clef with a key signature of two flats (B-flat and E-flat) and a 4/4 time signature. The scale is written in eighth notes, ascending and then descending.

12 B Flat



Musical staff for B-flat major scale, measures 12-18. The staff is in treble clef with a key signature of three flats (B-flat, E-flat, and A-flat) and a 4/4 time signature. The scale is written in eighth notes, ascending and then descending.

19 E Flat



Musical staff for E-flat major scale, measures 19-22. The staff is in treble clef with a key signature of four flats (B-flat, E-flat, A-flat, and D-flat) and a 4/4 time signature. The scale is written in eighth notes, ascending and then descending.

23 A Flat



Musical staff for A-flat major scale, measures 23-29. The staff is in treble clef with a key signature of five flats (B-flat, E-flat, A-flat, D-flat, and G-flat) and a 4/4 time signature. The scale is written in eighth notes, ascending and then descending.

30 D Flat



Musical staff for D-flat major scale, measures 30-33. The staff is in treble clef with a key signature of six flats (B-flat, E-flat, A-flat, D-flat, G-flat, and C-flat) and a 4/4 time signature. The scale is written in eighth notes, ascending and then descending.

34 F Sharp



Musical staff for F-sharp major scale, measures 34-37. The staff is in treble clef with a key signature of three sharps (F-sharp, C-sharp, and G-sharp) and a 4/4 time signature. The scale is written in eighth notes, ascending and then descending.

38 B



Musical staff for B major scale, measures 38-44. The staff is in treble clef with a key signature of two sharps (F-sharp and C-sharp) and a 4/4 time signature. The scale is written in eighth notes, ascending and then descending.

45 E



Musical staff for E major scale, measures 45-48. The staff is in treble clef with a key signature of one sharp (F-sharp) and a 4/4 time signature. The scale is written in eighth notes, ascending and then descending.

49 A



Musical staff for A major scale, measures 49-55. The staff is in treble clef with a key signature of no sharps or flats and a 4/4 time signature. The scale is written in eighth notes, ascending and then descending.

WHSAA Scale Sheet- Trumpet

2  
56

D



60

G



$\bullet = 120$

67



71



# WHSAA Scale Sheet - French Horn

$\text{♩} = 132$   
F

Horn in F

8 Bb

12 Eb

16 Ab

23 Db

27 Gb

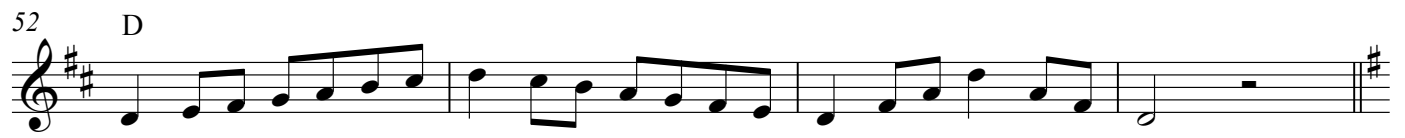
34 B

38 E

45 A

The image displays a musical score for a French Horn, titled "WHSAA Scale Sheet - French Horn". The score is written in 4/4 time and consists of nine staves of music. The tempo is marked as quarter note = 132. The key signature for the first staff is F major. The subsequent staves are labeled with their respective key signatures: Bb, Eb, Ab, Db, Gb, B, E, and A. Each staff contains a scale of eighth notes, starting with a quarter rest followed by a series of eighth notes ascending and then descending. The score is written in treble clef.

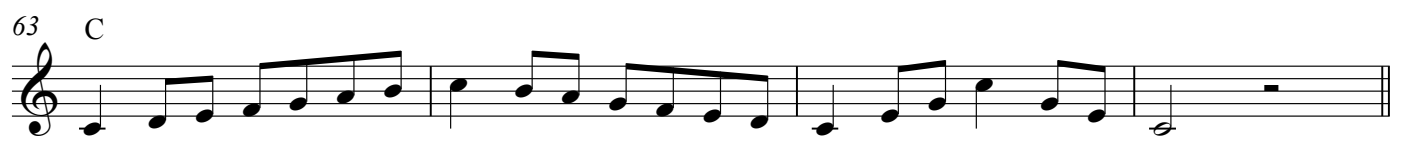
52 D



56 G



63 C



67  $\text{♩} = 132$   
Chromatic



74



78





# WHSAA Scale Sheet - Trombone/ Euphonium

♩ = 132

B Flat

First musical staff for the B Flat scale, measures 1-7. The staff is in bass clef with a key signature of two flats (Bb and Eb) and a 4/4 time signature. It contains a series of eighth-note runs ascending and then descending, with a final whole note rest.

8 E Flat

Second musical staff for the E Flat scale, measures 8-11. The staff is in bass clef with a key signature of three flats (Bb, Eb, and Ab). It contains a series of eighth-note runs ascending and then descending, with a final whole note rest.

12 A Flat

Third musical staff for the A Flat scale, measures 12-18. The staff is in bass clef with a key signature of four flats (Bb, Eb, Ab, and Db). It contains a series of eighth-note runs ascending and then descending, with a final whole note rest.

19 D Flat

Fourth musical staff for the D Flat scale, measures 19-22. The staff is in bass clef with a key signature of five flats (Bb, Eb, Ab, Db, and Fb). It contains a series of eighth-note runs ascending and then descending, with a final whole note rest.

23 G Flat

Fifth musical staff for the G Flat scale, measures 23-29. The staff is in bass clef with a key signature of six flats (Bb, Eb, Ab, Db, Fb, and Gb). It contains a series of eighth-note runs ascending and then descending, with a final whole note rest.

30 C Flat

Sixth musical staff for the C Flat scale, measures 30-33. The staff is in bass clef with a key signature of seven flats (Bb, Eb, Ab, Db, Fb, Gb, and Cb). It contains a series of eighth-note runs ascending and then descending, with a final whole note rest.

34 E

Seventh musical staff for the E scale, measures 34-37. The staff is in bass clef with a key signature of two sharps (F# and C#). It contains a series of eighth-note runs ascending and then descending, with a final whole note rest.

38 A

Eighth musical staff for the A scale, measures 38-44. The staff is in bass clef with a key signature of three sharps (F#, C#, and G#). It contains a series of eighth-note runs ascending and then descending, with a final whole note rest.

45 D

Ninth musical staff for the D scale, measures 45-48. The staff is in bass clef with a key signature of two sharps (F# and C#). It contains a series of eighth-note runs ascending and then descending, with a final whole note rest.

49 G

Tenth musical staff for the G scale, measures 49-55. The staff is in bass clef with a key signature of one sharp (F#). It contains a series of eighth-note runs ascending and then descending, with a final whole note rest.

WHSAA Scale Sheet - Tbn/ Euph

2  
56

C



60

F

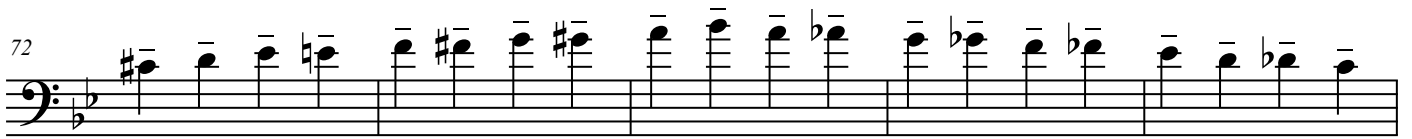


67

♩ = 72



72



77



# WHSAA Scale Sheet-Baritone TC

♩ = 132

C

Musical staff for C major scale, starting at measure 1. The scale is written in treble clef with a key signature of one flat (B-flat) and a 4/4 time signature. The notes are: C4, D4, E4, F4, G4, A4, B4, C5, B4, A4, G4, F4, E4, D4, C4.

8 F

Musical staff for F major scale, starting at measure 8. The scale is written in treble clef with a key signature of two flats (B-flat, E-flat) and a 4/4 time signature. The notes are: F4, G4, A4, Bb4, C5, D5, E5, F6, E5, D5, C5, Bb4, A4, G4, F4.

12 B Flat

Musical staff for B-flat major scale, starting at measure 12. The scale is written in treble clef with a key signature of three flats (B-flat, E-flat, A-flat) and a 4/4 time signature. The notes are: Bb4, C5, D5, Eb5, F6, G6, Ab6, Bb7, Ab6, G6, F6, Eb5, D5, C5, Bb4.

19 E Flat

Musical staff for E-flat major scale, starting at measure 19. The scale is written in treble clef with a key signature of four flats (B-flat, E-flat, A-flat, D-flat) and a 4/4 time signature. The notes are: Eb4, F4, G4, Ab4, Bb4, C5, Db5, Eb6, Db5, C5, Bb4, Ab4, G4, F4, Eb4.

23 A Flat

Musical staff for A-flat major scale, starting at measure 23. The scale is written in treble clef with a key signature of five flats (B-flat, E-flat, A-flat, D-flat, G-flat) and a 4/4 time signature. The notes are: Ab4, Bb4, C5, Db5, Eb6, Fb7, Gb7, Ab8, Gb7, Fb7, Eb6, Db5, C5, Bb4, Ab4.

30 D Flat

Musical staff for D-flat major scale, starting at measure 30. The scale is written in treble clef with a key signature of six flats (B-flat, E-flat, A-flat, D-flat, G-flat, C-flat) and a 4/4 time signature. The notes are: Db4, Eb4, F4, Gb4, Ab4, Bb4, Cb5, Db6, Cb5, Bb4, Ab4, Gb4, F4, Eb4, Db4.

34 F Sharp

Musical staff for F-sharp major scale, starting at measure 34. The scale is written in treble clef with a key signature of one sharp (F-sharp) and a 4/4 time signature. The notes are: F#4, G4, A4, B4, C5, D5, E5, F#6, E5, D5, C5, B4, A4, G4, F#4.

38 B

Musical staff for B major scale, starting at measure 38. The scale is written in treble clef with a key signature of two sharps (F-sharp, C-sharp) and a 4/4 time signature. The notes are: B4, C5, D5, E5, F#6, G#6, A#7, B8, A#7, G#6, F#6, E5, D5, C5, B4.

45 E

Musical staff for E major scale, starting at measure 45. The scale is written in treble clef with a key signature of three sharps (F-sharp, C-sharp, G-sharp) and a 4/4 time signature. The notes are: E4, F#4, G#4, A4, B4, C5, D5, E#6, D5, C5, B4, A4, G#4, F#4, E4.

49 A

Musical staff for A major scale, starting at measure 49. The scale is written in treble clef with a key signature of three sharps (F-sharp, C-sharp, G-sharp) and a 4/4 time signature. The notes are: A4, B4, C5, D5, E5, F#6, G#6, A#7, G#6, F#6, E5, D5, C5, B4, A4.

WHSAA Scale Sheet-Baritone TC

2  
56

D

Musical staff for D major scale, measures 56-60. The staff is in treble clef with a key signature of two sharps (F# and C#). The scale is written as a sequence of eighth notes: D4, E4, F#4, G4, A4, B4, C#5, D5, C#5, B4, A4, G4, F#4, E4, D4. The piece concludes with a double bar line and a repeat sign.

60

G

Musical staff for G major scale, measures 60-67. The staff is in treble clef with a key signature of one sharp (F#). The scale is written as a sequence of eighth notes: G4, A4, B4, C#4, D5, E5, F#5, G5, F#5, E5, D5, C#4, B4, A4, G4. The piece concludes with a double bar line and a repeat sign.

♩ = 72

67

Musical staff for F# major scale, measures 67-72. The staff is in treble clef with a key signature of three sharps (F#, C#, G#). The scale is written as a sequence of eighth notes: F#4, G#4, A4, B4, C#4, D5, E5, F#5, G#5, F#5, E5, D5, C#4, B4, A4, F#4. The piece concludes with a double bar line and a repeat sign.

72

Musical staff for C# major scale, measures 72-77. The staff is in treble clef with a key signature of three sharps (F#, C#, G#). The scale is written as a sequence of eighth notes: C#4, D5, E5, F#5, G#5, F#5, E5, D5, C#4, B4, A4, G#4, F#4, E4, D4, C#4. The piece concludes with a double bar line and a repeat sign.

77

Musical staff for C major scale, measures 77-82. The staff is in treble clef with a key signature of no sharps or flats. The scale is written as a sequence of eighth notes: C4, D4, E4, F4, G4, A4, B4, C5, B4, A4, G4, F4, E4, D4, C4. The piece concludes with a double bar line and a repeat sign.

# WHSAA Scale Sheet - Trombone/ Euphonium

$\text{♩} = 132$

B Flat

Musical staff for B Flat scale, measures 1-7. The staff is in bass clef with a key signature of two flats (Bb and Eb) and a 4/4 time signature. The music consists of a series of eighth notes ascending and then descending, with a final whole note rest.

8 E Flat

Musical staff for E Flat scale, measures 8-11. The staff is in bass clef with a key signature of three flats (Bb, Eb, and Ab) and a 4/4 time signature. The music consists of a series of eighth notes ascending and then descending, with a final whole note rest.

12 A Flat

Musical staff for A Flat scale, measures 12-18. The staff is in bass clef with a key signature of four flats (Bb, Eb, Ab, and Db) and a 4/4 time signature. The music consists of a series of eighth notes ascending and then descending, with a final whole note rest.

19 D Flat

Musical staff for D Flat scale, measures 19-22. The staff is in bass clef with a key signature of five flats (Bb, Eb, Ab, Db, and Fb) and a 4/4 time signature. The music consists of a series of eighth notes ascending and then descending, with a final whole note rest.

23 G Flat

Musical staff for G Flat scale, measures 23-29. The staff is in bass clef with a key signature of six flats (Bb, Eb, Ab, Db, Fb, and Gb) and a 4/4 time signature. The music consists of a series of eighth notes ascending and then descending, with a final whole note rest.

30 C Flat

Musical staff for C Flat scale, measures 30-33. The staff is in bass clef with a key signature of seven flats (Bb, Eb, Ab, Db, Fb, Gb, and Cb) and a 4/4 time signature. The music consists of a series of eighth notes ascending and then descending, with a final whole note rest.

34 E

Musical staff for E scale, measures 34-37. The staff is in bass clef with a key signature of two sharps (F# and C#) and a 4/4 time signature. The music consists of a series of eighth notes ascending and then descending, with a final whole note rest.

38 A

Musical staff for A scale, measures 38-44. The staff is in bass clef with a key signature of three sharps (F#, C#, and G#) and a 4/4 time signature. The music consists of a series of eighth notes ascending and then descending, with a final whole note rest.

45 D

Musical staff for D scale, measures 45-48. The staff is in bass clef with a key signature of two sharps (F# and C#) and a 4/4 time signature. The music consists of a series of eighth notes ascending and then descending, with a final whole note rest.

49 G

Musical staff for G scale, measures 49-55. The staff is in bass clef with a key signature of one sharp (F#) and a 4/4 time signature. The music consists of a series of eighth notes ascending and then descending, with a final whole note rest.

WHSAA Scale Sheet - Tbn/ Euph

2  
56

C



60

F

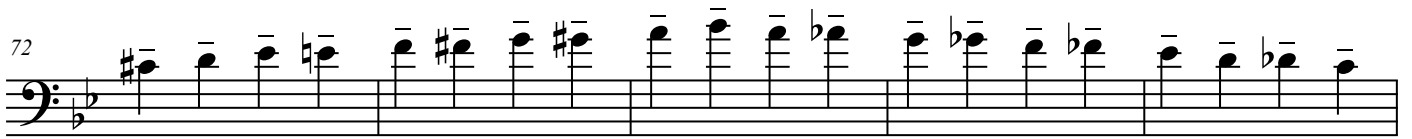


67

♩ = 72



72



77





WHSAA Scale Sheet - Tuba

2  
56

C

Musical staff for C major scale starting at measure 56. The staff is in bass clef with a common time signature (C). The scale is written as a single line of eighth notes: C2, D2, E2, F2, G2, A2, B2, C3, D3, E3, F3, G3, A3, B3, C4. The piece ends with a double bar line.

60

F

Musical staff for F major scale starting at measure 60. The staff is in bass clef with a key signature of one flat (Bb). The scale is written as a single line of eighth notes: F2, G2, A2, Bb2, C3, D3, E3, F3, G3, A3, Bb3, C4. The piece ends with a double bar line.

♩ = 120

67

Musical staff for F major scale starting at measure 67. The staff is in bass clef with a key signature of one flat (Bb). The scale is written as a single line of quarter notes: F2, G2, A2, Bb2, C3, D3, E3, F3, G3, A3, Bb3, C4. The piece ends with a double bar line.

71

Musical staff for F major scale starting at measure 71. The staff is in bass clef with a key signature of one flat (Bb). The scale is written as a single line of quarter notes: F2, G2, A2, Bb2, C3, D3, E3, F3, G3, A3, Bb3, C4. The piece ends with a double bar line.

75

Musical staff for F major scale starting at measure 75. The staff is in bass clef with a key signature of one flat (Bb). The scale is written as a single line of quarter notes: F2, G2, A2, Bb2, C3, D3, E3, F3, G3, A3, Bb3, C4. The piece ends with a double bar line.



# WHSAA Scale Sheet - Mallets

♩ = 132

B Flat



8

E Flat



15

A Flat



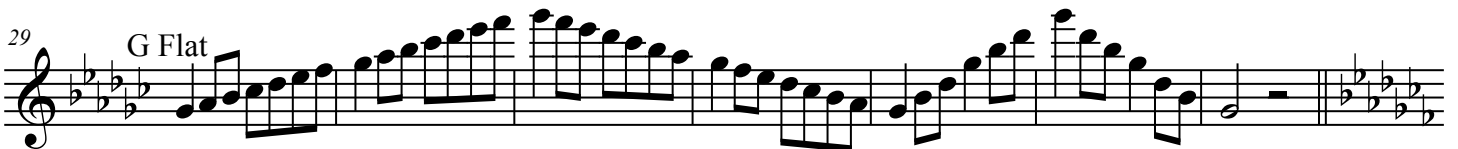
22

D Flat



29

G Flat



36

C Flat



43

E



50

A



WHSAA Scale Sheet - Mallets

2

57 D

Musical staff for measure 57, D major scale. The staff contains a sequence of eighth notes: D4, E4, F#4, G4, A4, B4, C5, B4, A4, G4, F#4, E4, D4. The key signature has two sharps (F# and C#).

64 G

Musical staff for measure 64, G major scale. The staff contains a sequence of eighth notes: G4, A4, B4, C5, B4, A4, G4, F#4, E4, D4, C4, B3, A3, G3. The key signature has one sharp (F#).

71 C

Musical staff for measure 71, C major scale. The staff contains a sequence of eighth notes: C4, D4, E4, F4, G4, A4, B4, C5, B4, A4, G4, F4, E4, D4, C4. The key signature has no sharps or flats.

78 F

Musical staff for measure 78, F major scale. The staff contains a sequence of eighth notes: F3, G3, A3, B3, C4, D4, E4, F4, E4, D4, C4, B3, A3, G3, F3. The key signature has one flat (Bb).

85 ♩ = 104

Musical staff for measure 85, chromatic scale. The staff contains a sequence of eighth notes: C4, C#4, D4, D#4, E4, E#4, F4, F#4, G4, G#4, A4, A#4, B4, B#4, C5. The tempo marking is ♩ = 104.

86

Musical staff for measure 86, chromatic scale. The staff contains a sequence of eighth notes: C5, B4, Bb4, Ab4, G4, Gb4, F4, Fb4, E4, Eb4, D4, Db4, C4, Cb4, B3. The key signature has two flats (Bb and Eb).

87

Musical staff for measure 87, chromatic scale. The staff contains a sequence of eighth notes: B3, Bb3, Ab3, G3, Gb3, F3, Fb3, E3, Eb3, D3, Db3, C3, Cb3, B2. The key signature has three flats (Bb, Eb, and Ab).